

300 Series Windows



LIMITED WARRANTY TO CONSUMERS
• GOOD •
HOUSEKEEPING
Since ★ 1909
REPLACEMENT or REFUND if DEFECTIVE



earthwise
WINDOWS & DOORS

300 Series Windows for New Construction

Features and Benefits



- Fusion welded frame and sash corners assures strength, durability, and years of trouble-free service in the home.
- Cam Locks with keepers fastened into reinforcements provide greater security and reduced air infiltration.
- 3/4" Extruded J-Channel; 2-7/8" jamb
- Dual locks on widths 24" and above.
- 3/4" insulated glass available with soft coat Low-E glass.
- Integral J-Channel eliminates the need for j-channel in most siding applications.
- Optional J-Channel filler can be used for cement siding and other siding applications.
- Reinforcement in fixed meeting rail is continuous for structural integrity.
- Positive interlock provides increased security and reduces air infiltration.
- Tilt-in lower sash for easy cleaning.
- Positive sloped sill provides water runoff, even in driving rain.
- Bulb seal at bottom of lower sash provides a tight fit between the sash and frame.
- Inverted block and tackle balances provide for smooth operation.
- Traditional (WM180) brick mould exterior provides an attractive look on the exterior of the window.
- Standard 3-0 x 5-0 (35 1/2" x 59 1/2" make size) meets 5.7 square feet of opening (egress for most areas).
- Extruded sash lift rail for easy operation.
- 1-1/4" extruded nail-fin with pre-punched holes for installation.
- Standard choice of Painters white, clay or tan color.



300 Series Window & Door Styles



300 Slider Window

- Easy lift out operable sash
- Brass adjustable rollers for easy operation
- 2 7/8" jamb depth and 1 9/16" depth from the nailing fin
- 3 Lite slider available as XOX in a 1/3 1/3 1/3 or 1/4 1/2 1/4 configuration
- Reinforcement in fixed meeting rails
- Locks and keepers are secured into extruded aluminum reinforcement.
- Same sash as the 300 single hung.
- Dual locks on sliders over 24" in height
- 1-1/4" Extruded nail-fin with pre-punched holes for installation.



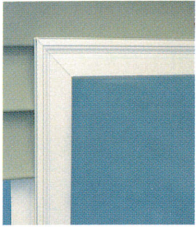
300 Picture Window and Shapes

- Interior glaze system
- Variety of shapes are available including half rounds, eyebrows, trapezoids, hexagons, etc.



300 Series Windows for New Construction

Earthwise Windows only uses premium materials that not only makes the window look great, but also provides great benefits for you and your home.



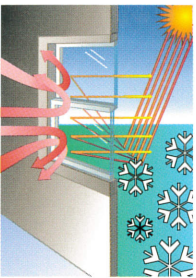
J-Channel & Integral Nailing Fin

The 1-1/4" Integral, pre-punched nailing fin is designed for easy and accurate siding installation. The 3/4" Integral J-channel conceals siding and may eliminate the need for applied J-Channel.



Tilt-In Window

Your 300 single hung window utilizes special hardware for easy cleaning. The operable sash tilts-in to access the outside glass from inside your home.



Glass Options/Low-E, Argon

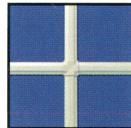
Glass is an important component of all windows and doors. LowE is a microscopically thin, virtually invisible coating deposited on a glass surface. this coating limits radiant heat flow between window panes by reflecting heat into your home during the winter weather and back to the outdoors during summer weather.



Grids in Air Space



STANDARD
FLAT



COLONIAL
PATTERN



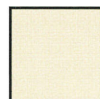
Your Choice of Colors



WHITE



CLAY



TAN

*Actual colors may vary from above.



www.EarthwiseWindows.net
www.lindsaywindows.com

North Mankato, Minnesota
(507) 625-4278

Union, Missouri
(636) 583-0850

Warrenville, Illinois
(630) 791-9079

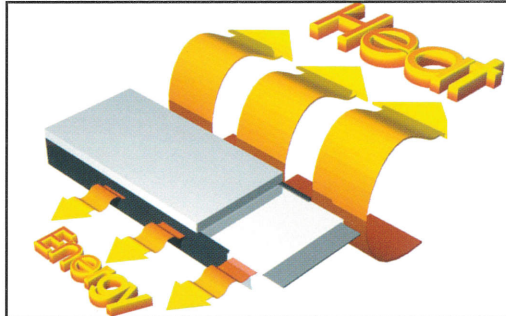
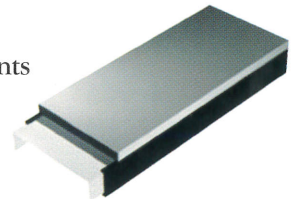
Baldwin, Georgia
(706) 776-7018

Duralite™ Warm Edge Spacer System

Energy Performance with Low-E and Duralite spacer system to ensure your home will be comfortable during the intense heat of summer and the frigid winds of winter upgrade your new windows and doors to our high performance glass package with Low-E glass and Duralite.

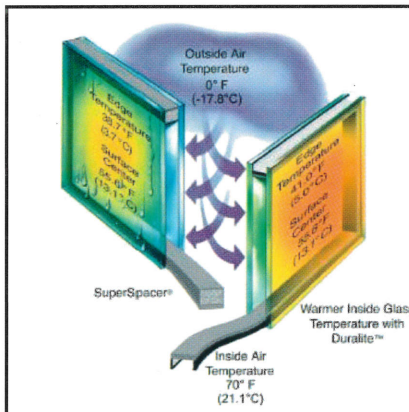
- Lowest conductivity warm edge spacer
- Improved condensation resistance
- Superior argon gas retention
- Unique patented design
- Exceeds ENERGY STAR requirements

Duralite™



Conductivity

Duralite replaces conductive materials used in solid spacers with air. This unique design concept creates one of the first hollow warm edge spacers on the market.



Condensation Resistance

No spacer system can eliminate condensation but Duralite reduces conductivity over other warm edge spacers. Reducing conductivity also reduces condensation.



earthwise
WINDOWS & DOORS



Made in the USA

BACKED BY THE GOOD HOUSEKEEPING SEAL

Authorized Earthwise Window & Door Dealer